

## NH fuse switch-disconnector size 1, 250 A, bus-mounting (33 600)



### Description

#### Article

Part No.: 33 600

QUADRON® 60Classic

NH fuse switch-disconnector size 1, 250 A, bus-mounting  
connection box terminal, outgoing terminal bottom/top

#### System

60Classic

Product group 09

Subgroup 27

pack size 1

EAN 4021267336004

## Advantages of the product

CrossLink® adapter technology

Fast and safe conversion of the connection for top or bottom; the parts under voltage remain shock protected

Simple and safe clicking into place and making contact

Safe connection through shock protection split into two

Busbar supports for flat busbars can be mounted above each other

Self-closing test holes are available in the cover.

**Catalog page** 2015 : 2/25, 2/29

eCl@ss 6.1 27142108

eCl@ss 7.1 27142108

ETIM 4.0 EC001040

ETIM 5.0 EC001040

## Approvals

### Standards

IEC 60947-1:2007 + A1:2010 + A2:2014

IEC 60947-3:2008 + A1:2012

### Approvals

IEC (CB), VDE, CCC



Type number: QCB-NH1

CCC certificate: 2012010302563561

## Product data

### Electrical data

Rated current (IEC): 250 A

Rated voltage (IEC) AC: 690 V

Rated voltage (IEC) DC: 440 V

Utilisation category AC-22B (400V)  
AC (IEC 60947-3) : AC-23B (400V/160A)  
AC-21B (690V)  
AC-20B (1000V) at pollution degree 2

visible information required if used at more than 690V AC: do not switch under load

Utilisation category DC specifications: 2 current paths (L1,L3) in series  
DC (IEC 60947-3) : DC-20B (440 V)  
DC-20B (1000V) at pollution degree 2

visible information required if used at more than 440V DC: do not switch under load

#### Power dissipation:

The power dissipation at a typical load of 80% of the rated current results to 16.6 W.  
(The power dissipation for operation with rated current would be 26 W.)

rated isolation voltage  $U_i$  (AC): 800 V  
Rated surge voltage  $U_{imp}$  : 6 kV  
max. permitted voltage (IEC) AC: 800 V  
max. permitted voltage (IEC) DC: 800 V

rated peak withstand current  $I_{pk}$  : 13.7 kA  
cond. rated short-circuit current with fuses: 80 kA / 690 V  
approved with fuse links of characteristics: gG  
rated short-time withstand current  $I_{cw}$  : 8,1kA / 1s

for fuse links IEC 60269-2-1 (I) / DIN VDE 0636-201 size 1 up to 23W power dissipation

In accordance with the specified AC and DC switching properties and in consideration of the overload conditions, the distances to earthed metal parts given below are to be adhered to. - top 190mm, side 75mm

When used as a disconnecter, the spacings can be ignored.

Degree of protection IP30 at front, degree of protection near terminal depends on installation

## Mechanical data

W x H x D: 184 x 243 x 129

Weight: 266 kg/100

Poles: 3-pole

front degree of protection: IP30

## Terminal points

box terminal

Cu 70-185mm<sup>2</sup>f

Cu 35-150mm<sup>2</sup>s(r)

Cu 35-120mm<sup>2</sup>f+AE

la.Cu 15.5-24mm large

terminal space 24.5 x 12mm

min. terminal space height 3mm

(flexible cables of maximum cross-section may not fit when using wire-end ferrule)

## Material properties

Main body: temperature stability 125°C,  
self-extinguishing in acc. to UL 94,  
creepage resistance CTI 200,  
halogen-free

Shock protection cover: temperature stability 125°C,  
self-extinguishing in acc. to UL 94,  
creepage resistance CTI 200

Handle: temperature stability 125°C,  
self-extinguishing in acc. to UL 94,  
creepage resistance CTI 200,  
halogen-free

Adapter plate: temperature stability 125°C,  
self-extinguishing in acc. to UL 94,  
creepage resistance CTI 200,  
halogen-free

Contacts: spring-loaded copper contacts, silver plated

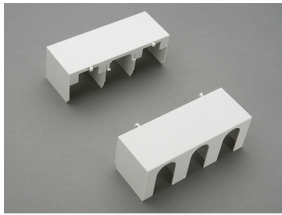
## Version

Variant with M10 connection screws: 33 601

Variant with electronic fuse monitoring: 33 325

Variant with electromechanical fuse monitoring: 33 160

## Accessories



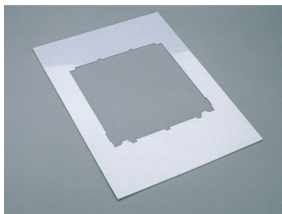
### **33 142**

cover for cable lugs  
for NH fuse switch disconnecter size 1



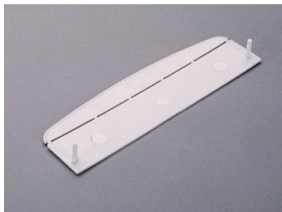
### **33 145**

prism terminal, double  
2x 35-70 mm<sup>2</sup>  
size 1



### **33 152**

Trim frame  
215 x 330  
size 1



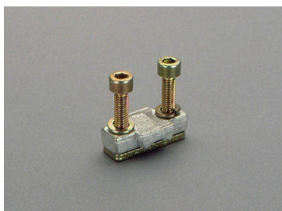
### **33 155**

barrier for handle  
for fuse switch-disconnector size 1-3



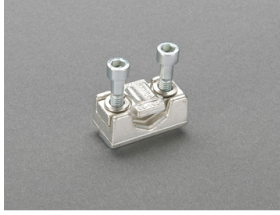
### **33 157**

lid interlock  
for sealing wire and padlocks  
Size 1 - 3



### **33 163**

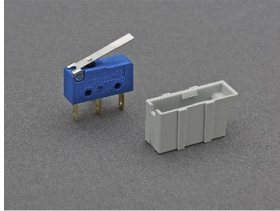
clamp-type connection  
70-150 mm<sup>2</sup>  
size 1

**33 166**

prism terminal for fuse switch-disconnector

35-150mm<sup>2</sup>, Cu and Al

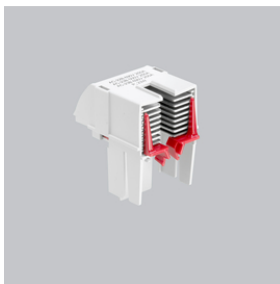
size 1

**33 917**

pilot switch for lid position

pilot switch: 1 reversing switch: 250V AC / 5A; 30V DC / 4A

Size 1

**33 918**

arcing chamber

QCB-NH1